

A photograph of a rural landscape. In the foreground, a dirt path leads through a fenced-in area. The fences are made of wooden posts and rails. To the right, there is a dark, rectangular structure, possibly a shed or barn. The background shows a green field and a line of trees under a blue sky with scattered white clouds.

WORCESTERSHIRE LOCAL ACCESS FORUM – 2/23_24

14 February 2024

WORCESTERSHIRE LOCAL ACCESS

FORUM – 2/23_24

- Opening Items
- Apologies
- Declaration
- Confirmation of Minutes
- Actions
- Matters Arising





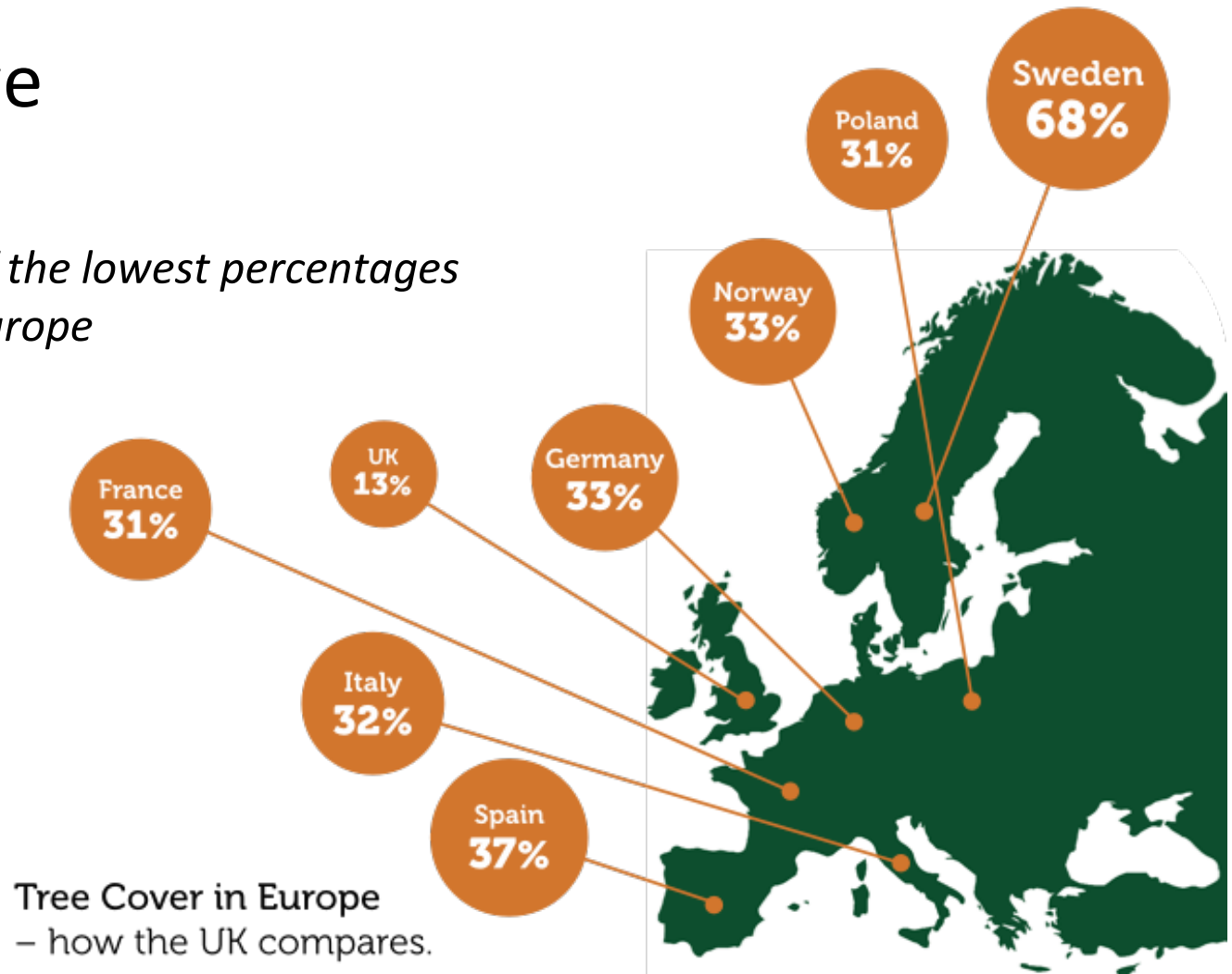
The Heart of England Forest

Worcestershire Local Access Form

www.heartofenglandforest.org

Why are we here?

Britain has one of the lowest percentages of tree cover in Europe



Biodiversity



Nature Connectedness



Our Vision

- Create and conserve a 30,000 acre woodland
- Create a forest full of light and air to benefit the environment, wildlife and people
- Protected & secured for generations





Our Founder

- Felix was a local landowner, entrepreneur, poet and lover of trees
- He wanted to bring trees back to the landscape
- First small wood planted in 1996 – Ralph's Wood
- In 2003 the charity was born

Our location





Growing
the Forest

Winter
2022/23

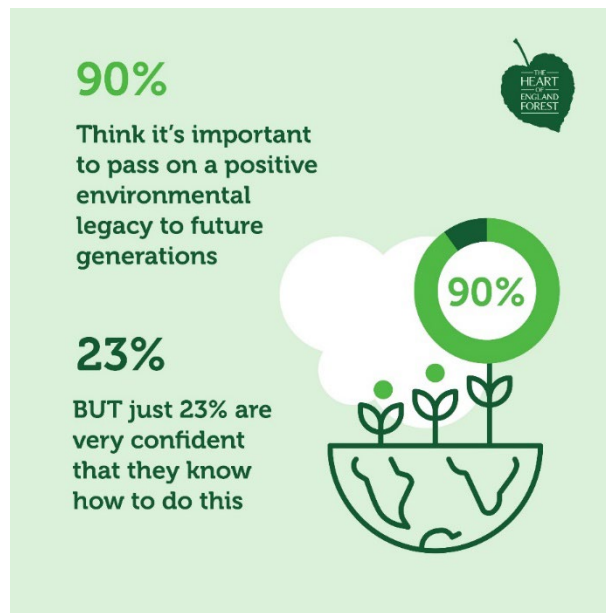


A national asset



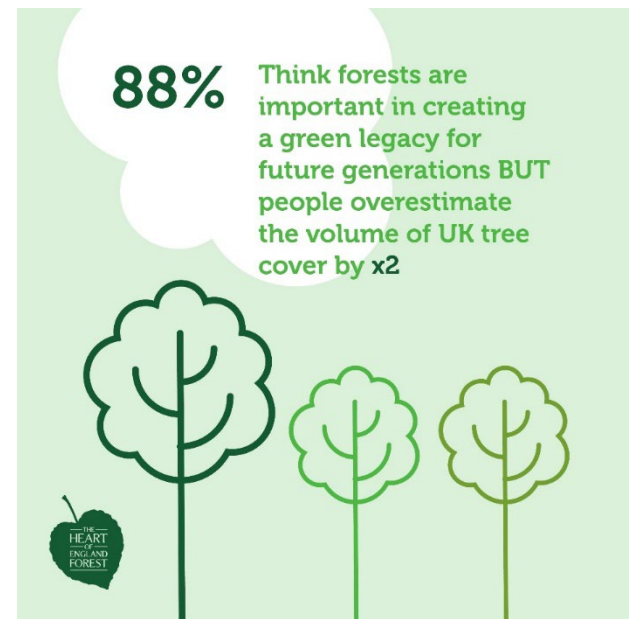
Why people think it's important to leave a green legacy for future generations

GREEN LEGACY SURVEY 2023



90% Think it's important to pass on a positive environmental legacy to future generations

23% BUT just 23% are very confident that they know how to do this



88% Think forests are important in creating a green legacy for future generations BUT people overestimate the volume of UK tree cover by x2

A Forest for Wildlife

- SSSI at Bannam's Wood, Morton Bagot
- Record and monitor insects, reptiles, amphibians, birds and mammals
- Total number of bird species recorded in the Forest is 150



Little owl

Visiting the Forest



- There are now over 100 miles of permissive footpaths and public rights of way for people to explore the Forest
- Dorsington and Spernal walking routes
- 8 waymarked trails

Events in the Forest

- Guided walks
- Skills workshops
- Garden of Heroes & Villains
- Mini and Young Forester monthly clubs



Volunteering through the seasons



SPRING

- March
- April
- May

- **End of planting season**, all trees must be in ground by end of March.
- **Seed sowing** in the tree nursery and beginning of **weeding and sapling care**.
- Begin **managing footpaths** to keep them safe and accessible for visitors.



SUMMER

- June
- July
- August

- **Wildlife and habitat survey season:** A mix of self-led and team activities helping to monitor and understand our changing landscape and wildlife.
- **Volunteering** at the Garden of Heroes and Villains to support our open days and evenings.
- **Heathland management work:** stabilising and improving the habitat of our heathland.



AUTUMN

- September
- October
- November

- **Beginning of pond habitat management** with the biodiversity team.
- **Seed collection** with the nursery team: We collect seeds for growing the next generation of trees for the Forest, which are processed for storage before planting out in future years.



WINTER

- December
- January
- February

- **Winter surveys**, such as woodland bird surveys.
- **Woodland management** including traditional practises such as hedge laying, coppicing, and pollarding. We perform these tasks in winter when our trees are entering dormancy, thereby inflicting minimal stress to the trees, and to minimise disturbance to wildlife.

The future of the Forest





Supporting the Forest

[Volunteering](#)

[Become a Friend of the Forest](#)

[Visit the Forest](#)

[Free e-newsletter sign up](#)

[Spread the word](#)



Thank you

Any questions?

ros.anscombe@heartofenglandforest.org
Community Partnership Officer
Mob: 07754 800258



WORCESTERSHIRE LOCAL ACCESS

FORUM – 2/23_24

- PRow Team Report
- Feedback from the ATSWG
- Items for Noting
- Topics for Future Meetings
- AOB
- Future Meeting dates

